



## turbine-powered reel irrigator



GREENCARE



### Leader 32 turbine Ø 32 mm x 70 m

Leader 32 uses water pressure to retrieve the sprinkler cart, ensuring uniform, controlled, and silent irrigation. Reliable and extremely versatile, it is ideal for both professional and non-professional applications: gardening, floriculture, sports fields, racetracks, and campsites.

Thanks to its innovative low-pressure turbine system, it allows the use of special water sources and fertilizers, optimizing the use of water resources.

inlet pressure <b>min - max</b>	rewind speed <b>min - max</b>	wetted area <b>m<sup>2</sup></b>	machine weight <b>kg.</b>	package <b>*</b>	gross weight <b>kg.</b>	dimensions  <b>cm.</b>	 <b>2 units</b>
2,5 - 5,5 bar	8 - 40 m/h	3000 m <sup>2</sup>	110	B	124	90x90x110	2 units

( \* **A** box - **B** box on pallet - **C** pallets and nylon )



**code**  
**LE32070P**

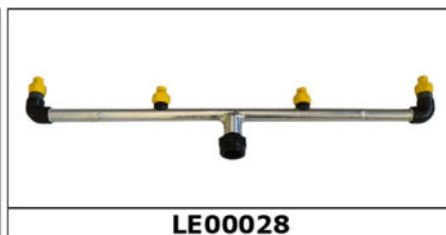
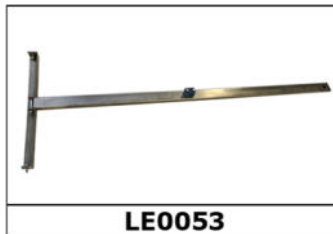
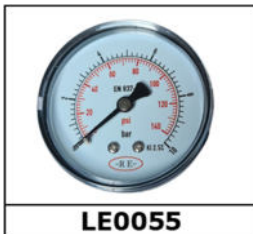
**STANDARD EQUIPMENT**

**Leader 32 m. 70 turbine**  
(Ø 32 mm PE hose - 70 m length)  
with:

- high performance turbine with gearbox
- sprinkler trolley on wheels
- sectorial sprinkler with nozzles 6, 7, 8 mm
- by-pass valve for adjustable flow rate and adjustable irrigation speed
- hoseguide
- automatic rolling stop in case of pipe rolling out of drum
- automatic rolling stop at end irrigation
- water passage stopping valve at end irrigation (overpressure)
- automatic sprinkler trolley lifting



code	accessories on request
<b>LE0055</b>	pressure gauge at the entry
<b>LE0009</b>	3 m flexible connection pipe with joints
<b>LE0053</b>	towing drawbar
<b>LE0041</b>	stopping device without water stop (to add to standard)
<b>LE0042</b>	stopping device without water stop (on alternative to standard)
<b>LE0048</b>	sprinkler trolley breadth cm. 26, on sleds (on alternative to standard)
<b>LE0028</b>	boom 70 cm - 4 nozzles - sprinkling width 8 m
<b>LE0026</b>	water pressure regulator 45 m.c.a.
<b>LE0044</b>	filter 1"1/4 with outlet valve
<b>LE0044C</b>	filter 1"1/4 with outlet valve and quick couplings
<b>LE0021</b>	pallet cm. 90 x 90
<b>LE0005</b>	box with pallet cm. 90 x 90 x 110 H



nozzle diameter mm.	inlet pressure bar	flow		max. wetted width m	useful wet width 85%	rainfall intensity in mm				
		l/min	m3/h			10m/h	20m/h	30m/h	40m/h	
<b>Leader Turbina 32/70 m</b>										
6	3	32	1,9	29	25	6,6	3,3	2,2	1,7	
	4,2	39	2,3	33	28	7,1	3,6	2,4	1,8	
	5,3	45	2,7	35	30	7,7	3,9	2,6	1,9	
7	3,3	42	2,5	30	26	8,4	4,2	2,8	2,1	
	4,6	52	3,1	34	29	9,2	4,6	3,1	2,3	
	5,8	60	3,6	37	31	9,7	4,9	3,2	2,4	
8	3,9	57	3,4	34	29	10,1	5,1	3,4	2,5	
	5,0	69	4,1	38	32	10,9	5,5	3,6	2,7	
	5,8	80	4,8	41	35	11,7	5,9	3,9	2,9	